



HOUSTON METHODIST DEBAKEY CARDIOLOGY ASSOCIATES CENTRAL REGION PROVIDERS 2025

HOUSTON
Methodist[®]
DEBAKEY HEART &
VASCULAR CENTER

General Cardiology & Cardiac Imaging



WILLIAM A. ZOGHBI, MD

Cardiology Chair, Houston Methodist DeBakey Heart & Vascular Center
General Cardiology and Cardiac Imaging

EXPERTISE

- Coronary artery disease
- Echocardiography
- General cardiology
- Valvular disease

LOCATION

Texas Medical Center



WALEED AHMED, MD

General Cardiology and Cardiac Imaging

EXPERTISE

- Advanced cardiac imaging
- Cardiac MRI
- Cardiac CT and coronary CT angiography
- Echocardiography
- Preventive cardiology

LOCATION

Texas Medical Center



MOUAZ AL-MALLAH, MD, MSC

General Cardiology and Cardiac Imaging

EXPERTISE

- Cardiac imaging
- General cardiology
- Cardiac CT
- Cardiac MRI
- Cardiac PET
- Nuclear cardiology
- Preventive cardiology

LOCATION

Texas Medical Center



MAHMOUD AL RIFAI, MD

General Cardiology and Cardiac Imaging

EXPERTISE

- Advanced cardiac imaging
- Cardiac PET
- Cardiac CT and coronary CT angiography
- Echocardiography
- Nuclear cardiology
- Preventive cardiology
- Coronary artery disease

LOCATIONS

Pearland



MOHAMMED CHAMSI-PASHA, MD

General Cardiology and Cardiac Imaging

EXPERTISE

- Advanced cardiac imaging (cardiac CT and MRI)
- Echocardiography
- Nuclear cardiology
- Valvular heart disease
- Coronary heart disease
- Hypertension
- Hyperlipidemia
- Cardiovascular prevention

LOCATIONS

Texas Medical Center
Pearland



SU MIN CHANG, MD

General Cardiology and Cardiac Imaging

EXPERTISE

- Coronary artery disease
- Cardiac CT
- Cardiac imaging
- Cardiovascular risk assessment
- General cardiology
- Preventive cardiology

LOCATION

Texas Medical Center



L. BINDU CHEBROLU, MD

General Cardiology and Cardiac Imaging

EXPERTISE

- Cardiac imaging
- Congestive heart failure
- Cardiac arrhythmia
- Echocardiography & transesophageal echocardiography
- General and women's cardiology
- Preventive cardiology
- Valvular disease
- Women's heart health

LOCATION

Pearland



CARLOS EL-TALLAWI, MD

General Cardiology and Cardiac Imaging

EXPERTISE

- Mitral regurgitation
- Mitral valve prolapse
- Cardiac MRI
- Echocardiography/ cardiac ultrasound
- General cardiology
- Transesophageal echocardiography
- Valvular heart disease

LOCATION

Texas Medical Center

General Cardiology & Cardiac Imaging (cont.)



KARLA M. KURRELMEYER, MD

General Cardiology and Cardiac Imaging

LOCATION

Texas Medical Center

EXPERTISE

- Cardiovascular disease in women
- Echocardiography
- Heart failure with preserved ejection fraction
- Mitral valve prolapse syndrome palpitations
- Resistant hypertension
- Stress testing



JOHN J. MAHMARIAN, MD

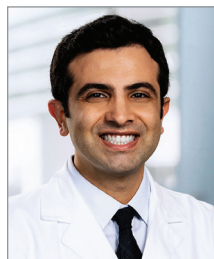
General Cardiology, Nuclear Imaging and Cardiac CT

LOCATION

Texas Medical Center

EXPERTISE

- Calcium scoring
- Cardiac CT
- Cardiac imaging
- Cardiac PET
- General and preventive cardiology
- Nuclear cardiology
- Stress testing



MAAN MALAHFJI, MD

General Cardiology and Cardiac Imaging

LOCATION

Texas Medical Center

EXPERTISE

- Cardiac CT
- Cardiomyopathies and heart failure
- Cardiac MRI
- Cardiovascular prevention
- Coronary artery disease
- Echocardiography
- Hypertension management
- Myocarditis and pericarditis
- Sports cardiology
- Valvular heart disease



FAISAL NABI, MD

General Cardiology and Cardiac Imaging

EXPERTISE

- Cardiac arrhythmia
- Cardiac CT
- Cardiac MRI
- Cardiac PET/SPECT
- Echocardiography
- General and preventive cardiology
- Nuclear cardiology
- Stress testing

LOCATION

Texas Medical Center



SHERIF F. NAGUEH, MD

Hypertrophic Cardiomyopathy and Cardiac Imaging

EXPERTISE

- Cardiac imaging
- Diastolic heart failure
- Echocardiography
- General cardiology
- Hypertrophic cardiomyopathy

LOCATION

Texas Medical Center



MIGUEL A. QUIÑONES, MD

General Cardiology and Cardiac Imaging

EXPERTISE

- General and preventive cardiology
- Echocardiography
- Valvular function

LOCATIONS

Texas Medical Center
Pearland

General Cardiology & Cardiac Imaging (cont.)



RABEL RAMEEZ, MD

General Cardiology and Cardiac Imaging

LOCATION

Texas Medical Center

EXPERTISE

- Advanced cardiac imaging
 - Cardiac CT
 - Echo
 - PET
 - Single-photon emission CT (SPECT)
- General cardiology



DIPAN J. SHAH, MD

Chief, Division of Cardiovascular Imaging

General Cardiology and Cardiac Imaging

LOCATION

Texas Medical Center

EXPERTISE

- Cardiac MRI
- Mitral valve prolapse
- Valvular disease
- Coronary artery disease
- General cardiology
- Bicuspid aortic valve



GOPI SHAH, MD

General Cardiology and Cardiac Imaging

LOCATION

Texas Medical Center

EXPERTISE

- Arrhythmias
- Coronary artery disease
- Echocardiography
- Heart failure with preserved ejection fraction
- Hypercholesterolemia
- Hyperlipidemia
- Hypertension
- Ischemic heart disease
- Prevention in cardiology
- Valvular heart disease
- Women and heart disease

Cardiovascular Prevention & Wellness



SADEER AL-KINDI, MD

Preventive Cardiology and Cardiac Imaging

EXPERTISE

- Cardiovascular prevention
- Cardiac CT
- Cardiac MRI
- Ischemic heart disease
- Atherosclerosis
- Cholesterol disorders
- Cardiometabolic disorders

LOCATIONS

Texas Medical Center
Pearland



ELEONORA AVENATTI, MD

Preventive Cardiology and Obesity Medicine

EXPERTISE

- Cardiometabolic health
- Cardiovascular prevention in at risk population
- Preventive cardiology
- Obesity
- Hypertension
- Hyperlipidemia
- Lifestyle counseling
- Metabolic syndrome
- Risk assessment in cardiovascular disease

LOCATION

Texas Medical Center



KHURRAM NASIR, MD, MPH

General Cardiology and Prevention/Wellness

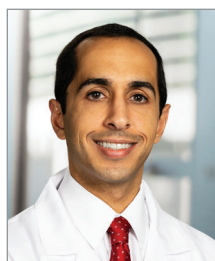
EXPERTISE

- Preventive cardiology
- Family history of heart disease
- Premature cardiovascular disease
- Resistant hypertension
- Diabetes mellitus/
metabolic syndrome
- Wellness
- Cardiac imaging
- Lipid disorders
- Cardiovascular risk reduction

LOCATION

Texas Medical Center

Cardiovascular Prevention & Wellness (cont.)



KERSHAW PATEL, MD

General Cardiology and Prevention/Wellness

EXPERTISE

- Preventive cardiology
- Risk assessment in cardiovascular disease
- Heart failure
- Coronary artery disease
- Echocardiography
- Diabetes mellitus
- Metabolic syndrome
- Obesity
- Hypertension
- Lifestyle counseling

LOCATION

Texas Medical Center



AHMED SOLIMAN, MD

General Cardiology and Cardiac Imaging

EXPERTISE

- Diabetes mellitus/metabolic syndrome
- Family history of heart disease
- General and preventive cardiology
- Echocardiography
- Holter monitoring
- Cardiac catheterization
- Exercise testing and wellness
- Lipid disorders and management
- Cardiovascular risk assessment
- Cardiac imaging
- Resistant hypertension

LOCATION

Texas Medical Center

Advanced Heart Failure & Transplant Cardiology



SYED ADEEL AHSAN, MD

Heart Failure

EXPERTISE

- Advanced heart failure
- Cardiogenic shock
- Cardiomyopathy
- Heart biopsy
- Heart transplant
- Left ventricular assist devices
- Mechanical circulatory support
- Multi-organ transplants
- Myocarditis

LOCATION

Texas Medical Center



ARVIND BHIMARAJ, MD, MPH

Heart Failure

EXPERTISE

- Advanced heart failure
- Heart transplant
- Mechanical circulatory support
- Systolic and diastolic heart failure
- Sarcoidosis
- Cardiac amyloidosis
- Cardiac recovery

LOCATION

Texas Medical Center



ASHRITH GUHA, MD, MPH

Heart Failure and Pulmonary Hypertension

EXPERTISE

- Advanced heart failure
- Heart transplant
- Right heart failure
- Systolic and diastolic heart failure
- Mechanical circulatory support
- Chronic thromboembolic pulmonary hypertension (CTEPH)
- Pulmonary hypertension
- Cardiac sarcoidosis
- Unexplained dyspnea

LOCATION

Texas Medical Center



IMAD HUSSAIN, MD

Heart Failure

EXPERTISE

- Advanced heart failure
- Heart transplant
- Right heart failure
- Systolic and diastolic heart failure
- Mechanical circulatory support
- Cardiac amyloidosis
- Pulmonary hypertension
- Unexplained dyspnea
- Hypertrophic cardiomyopathy

LOCATION

Texas Medical Center

Advanced Heart Failure & Transplant Cardiology (cont.)



MAHWASH KASSI, MD

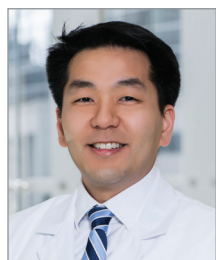
Heart Failure

EXPERTISE

- Advanced heart failure
- Heart transplant
- Mechanical circulatory support
- Systolic and diastolic heart failure
- Echocardiography
- Cardiac amyloidosis
- Sarcoidosis

LOCATION

Texas Medical Center



JU KIM, MD

Heart Failure

EXPERTISE

- Advanced heart failure
- Heart transplant
- Mechanical circulatory support
- Systolic and diastolic heart failure
- Cardiac amyloidosis
- Sarcoidosis
- Hypertrophic cardiomyopathy
- Cardiogenic shock

LOCATION

Texas Medical Center



CINDY M. MARTIN, MD

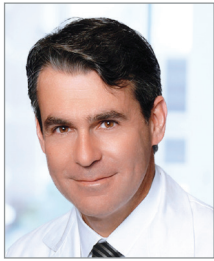
Chief, Division of Advanced Heart Failure, Heart Transplantation and Mechanical Circulatory Support
Heart Failure and Adult Congenital Heart Disease

EXPERTISE

- Advanced heart failure
- Cardiovascular genetics
- Familial cardiomyopathy
- Heart transplant
- Mechanical circulatory support
- Peripartum cardiomyopathy
- Adult congenital heart disease

LOCATION

Texas Medical Center



GUILLERMO TORRE-AMIONE, MD, PHD

Heart Failure

EXPERTISE

- Advanced heart failure
- Heart transplant
- Mechanical circulatory support
- Systolic and diastolic heart failure

LOCATION

Texas Medical Center



RAYAN YOUSEFZAI, MD

Heart Failure

EXPERTISE

- Advanced heart failure
- Heart transplant
- Mechanical circulatory support
- Cardiomyopathy
- Systolic and diastolic heart failure
- Hemodynamics

LOCATION

Texas Medical Center

Interventional Cardiology & Structural Heart Disease



JOE AOUN, MD

Interventional Cardiology and Structural Heart Disease

LOCATION

Texas Medical Center

EXPERTISE

- Acute coronary syndromes
- Angioplasty
- ASD/PFO closure
- Cardiac catheterization
- Coronary atherectomy
- Left atrial appendage closure/ Watchman procedure
- MitraClip
- Paravalvular leak repair
- Percutaneous coronary interventions
- Peripheral arterial disease
- Stents
- Structural heart disease
- Transcatheter aortic valve implantation/replacement
- Transcatheter mitral valve replacement
- Transradial catheterization
- Transcatheter tricuspid valve repair and replacement



JOHN BUERGLER, MD

Interventional Cardiology

LOCATION

Texas Medical Center

EXPERTISE

- General and interventional cardiology
- Heart catheterization
- Hyperlipidemia
- Hypertrophic cardiomyopathy (HOCM)
- Alcohol septal ablation



NADEEN FAZA, MD

Structural Heart Disease and Cardiac Imaging

LOCATION

Texas Medical Center

EXPERTISE

- Interventional echocardiography
- Valvular disease
- Mitral and tricuspid regurgitation
- Aortic stenosis
- Catheter-based valve repair
- Echocardiography and transesophageal echocardiography
- Cardiac imaging and structural heart/valve disease



SACHIN GOEL, MD

Interventional Cardiology and Structural Heart Disease

LOCATION

Texas Medical Center

EXPERTISE

- Left atrial appendage closure
- Valvular heart disease
- Transcatheter aortic valve implantation (TAVI/TAVR)
- Transcatheter mitral valve repair (MitraClip)
- Transcatheter tricuspid valve repair and replacement
- Balloon aortic and mitral valvuloplasty
- Atrial septal defect (ASD) and patent foramen ovale (PFO) closure
- Coronary artery disease
- High-risk percutaneous coronary prevention
- Stents
- Radial catheterization and intracoronary imaging



NEAL S. KLEIMAN, MD

Chief, Division of Interventional Cardiology

Interventional Cardiology and Structural Heart Disease

LOCATION

Texas Medical Center

EXPERTISE

- Interventional cardiology
- High-risk coronary intervention
- Valvular disease
- Transcatheter aortic valve implantation (TAVI/TAVR)
- Transcatheter mitral valve repair
- Stents



STEPHEN H. LITTLE, MD

Structural Heart Disease and Cardiac Imaging

LOCATION

Texas Medical Center

EXPERTISE

- Interventional echocardiography
- Valvular disease
- Mitral and tricuspid regurgitation
- Aortic stenosis
- Catheter-based valve repair
- Echocardiography and transesophageal echocardiography
- Cardiac imaging and structural heart/valve disease



ALPESH R. SHAH, MD

Interventional Cardiology

LOCATIONS

Texas Medical Center
Pearland

EXPERTISE

- Coronary and peripheral interventions
- Chronic coronary total occlusion (CTO) interventions
- Complex and high-risk coronary interventions
- Coronary brachytherapy
- Robotic coronary interventions
- Myocardial angiogenesis
- Carotid artery stent

Adult Congenital Heart Disease



VALERIA DUARTE, MD, MPH

Adult Congenital Heart Disease and Cardiac Imaging

EXPERTISE

- Adult congenital heart disease
- Echocardiography
- Pregnancy and cardiovascular disease
- Connective tissue disorders
- Cardiac MRI
- Pulmonary hypertension

LOCATIONS

Texas Medical Center
Sugar Land

Cardiac Electrophysiology



AMISH S. DAVE, MD, PHD

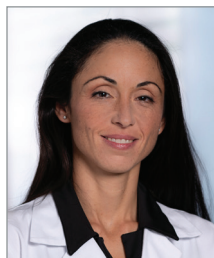
Cardiac Electrophysiology

EXPERTISE

- Second-opinion consultations
- Laser lead extractions
- Left atrial appendage occlusion
- Pacemakers and defibrillators
- VT, AFib, SVT and other ablations
- Adult congenital heart disease ablations
- Vein of Marshall ablation

LOCATIONS

Texas Medical Center
Pearland



ADI LADOR, MD

Cardiac Electrophysiology

EXPERTISE

- Ablation procedures
- Pacemakers and defibrillator implants
- Arrhythmias
- Subcutaneous defibrillator
- Atrial fibrillation
- Sudden cardiac arrest
- Biventricular defibrillators and pacemakers
- Supraventricular tachycardia
- Bradycardia
- Ventricular tachycardia and PVC ablation
- Heart rhythm monitoring
- Left atrial appendage occlusion device implant (Watchman, Amulet)
- Inherited arrhythmia syndromes (Brugada, Long QT, CPVT)
- Syncope
- Leadless pacemaker

LOCATION

Texas Medical Center



NILESH MATHURIA, MD

Cardiac Electrophysiology

EXPERTISE

- Ablation Procedures
- Arrhythmias
- Electrophysiology
- Implant auto defibrillator
- Implantable cardioverter defibrillator
- Pacemakers
- Ventricular tachycardia
- Supraventricular tachycardia
- Watchman
- Biventricular pacing
- Atrial fibrillation
- Leadless pacemaker and lead extraction

LOCATIONS

Texas Medical Center
West Houston



PAUL SCHURMANN, MD

Cardiac Electrophysiology

EXPERTISE

- Left atrial appendage occlusion
- Subcutaneous defibrillator
- VT, AFib, SVT and other ablations
- Vein of Marshall ablation
- Pacemakers, defibrillators and implants
- Leadless pacemaker
- HIS pacing
- Central sleep apnea treatment
- Left bundle pacing

LOCATION

Texas Medical Center



MIGUEL VALDERRÁBANO, MD, PHD

Chief, Division of Cardiac Electrophysiology

Cardiac Electrophysiology

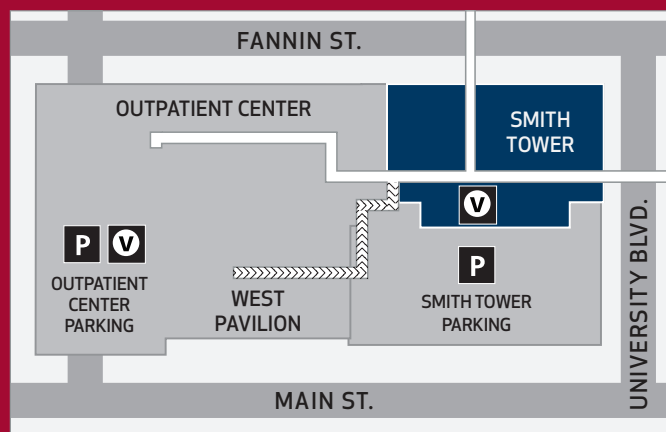
EXPERTISE

- Atrial fibrillation ablation, particularly persistent AFib and failed ablations
- VT, SVT ablations
- Epicardial ablations
- Left atrial appendage occlusion (Watchman, Lariat)
- Vein of Marshall ablation
- Pacemakers, defibrillators and implants
- Laser lead extractions
- Alcohol ablation of failed ablations for atrial flutter, ventricular tachycardia or premature ventricular complexes
- Cardioneuroablation

LOCATION

Texas Medical Center

To refer a patient, call the scheduling number of the desired location;
fax referral information; or send referrals via Houston Methodist Epic or EpicCare
Link with "**CARDIO HMH SM1901**" as the department location.

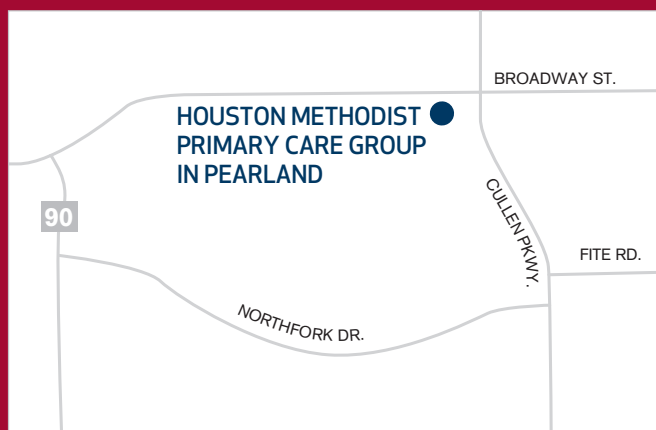


TEXAS MEDICAL CENTER

Houston Methodist Hospital

6550 Fannin St.
Smith Tower, Suite 1901
Houston, TX 77030

713.441.1100
Fax: 713.790.2643



PEARLAND

Houston Methodist Comprehensive Care Center in Pearland

8520 W. Broadway St.
Suite 230
Pearland, TX 77584

713.441.9909
Fax: 713.790.2643



Houston Methodist Hospital is
ranked No. 15 among 778 hospitals
by *U.S. News & World Report* for
cardiology and heart surgery.

houstonmethodist.org/spg/heart-vascular

