

Dragon: Manage Vocabulary

How to Add and Train a New Word

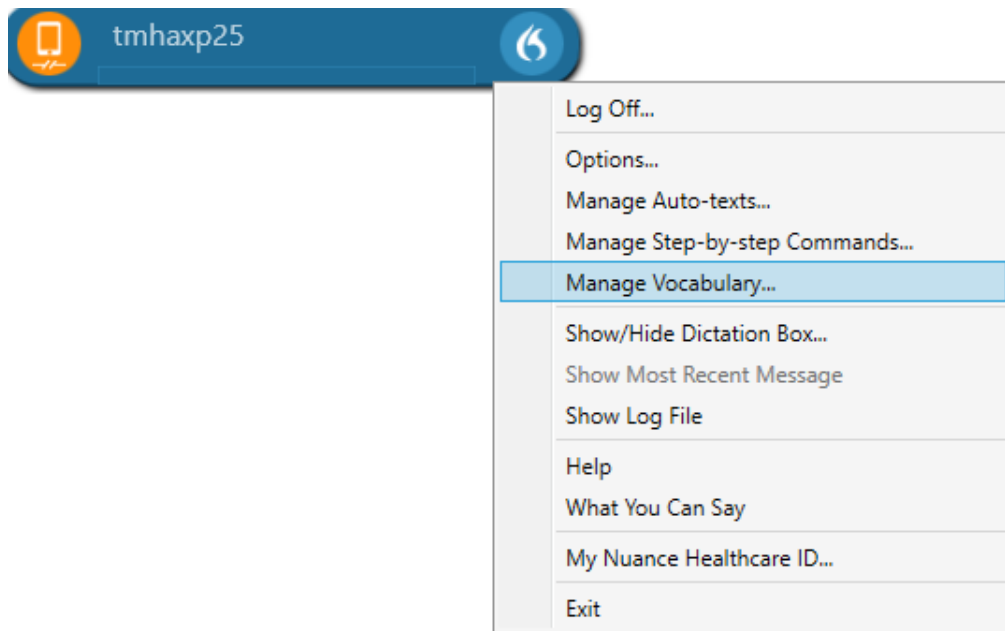


Audience: All Providers

Learn how to add and train Dragon to use a new word, e.g. COVID-19.

Adding and Training a New Word

1. Click on **DragonBar Menu** (blue flame).
2. Go to **Manage Vocabulary**.

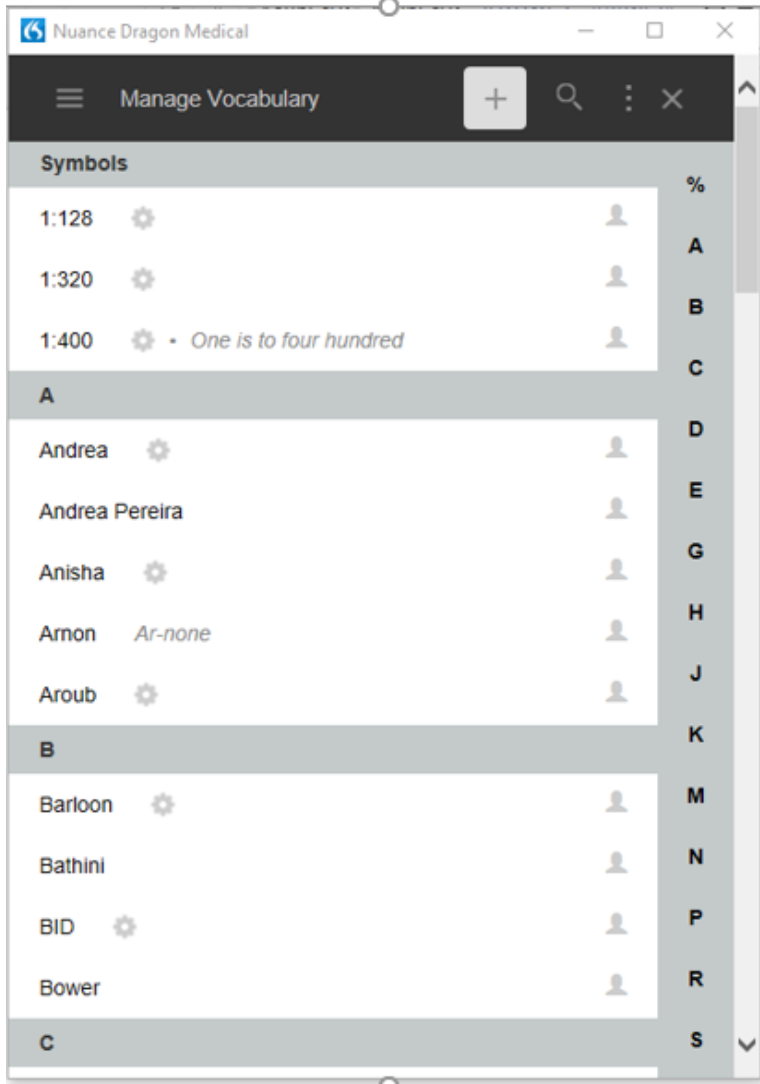


Dragon: Manage Vocabulary

How to Add and Train a New Word



3. The **Manage Vocabulary** window opens.
4. Click the **+** sign on top to add a new word.

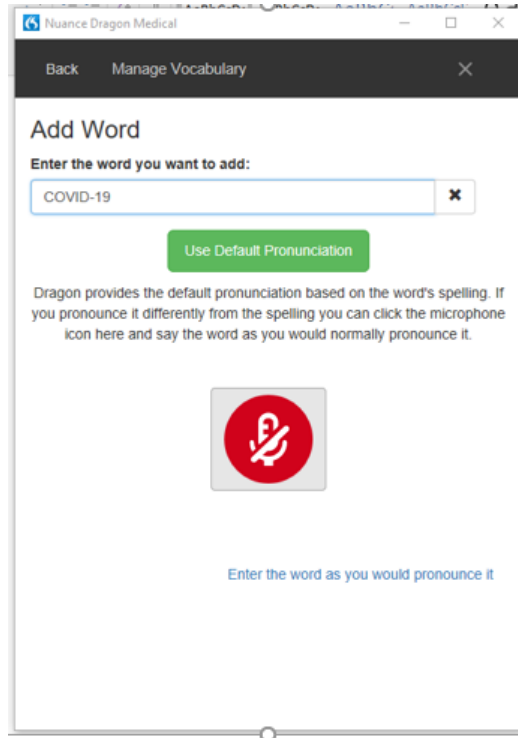


Dragon: Manage Vocabulary

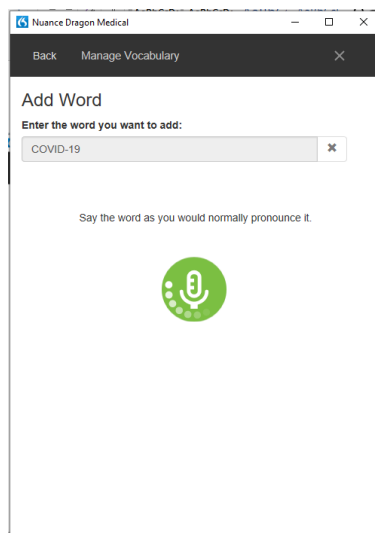
How to Add and Train a New Word



5. The **Add Word** window opens. Type the new word (eg. COVID-19).
6. Click the **red microphone** to train Dragon on how you pronounce/say the word.



7. Say the word "COVID19" into your microphone.

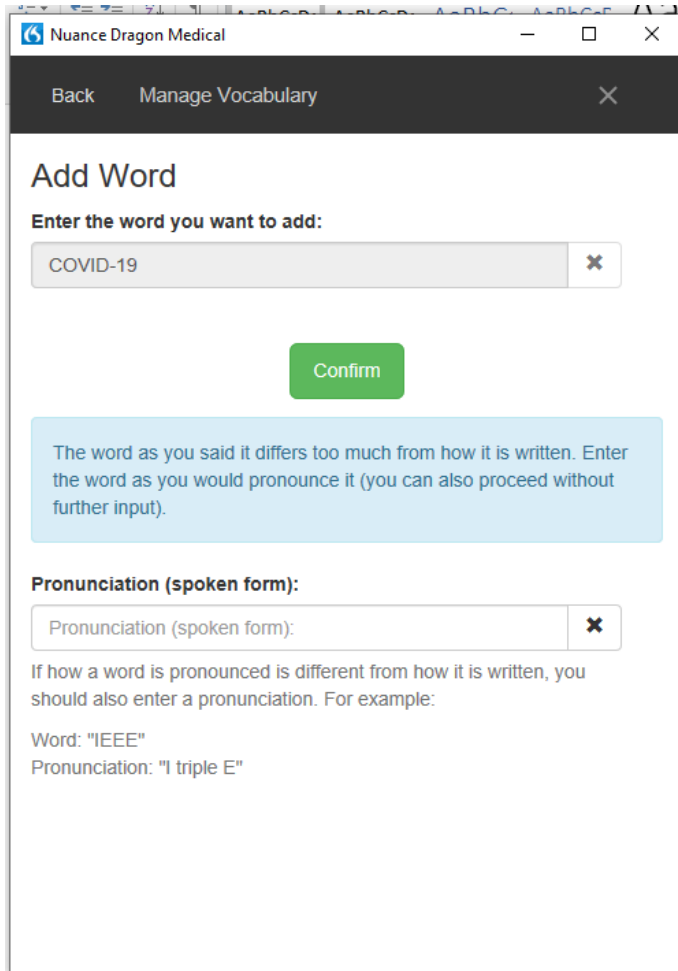


Dragon: Manage Vocabulary

How to Add and Train a New Word



8. Click **Confirm** after training the word. You may see a message that says the way you said word differs, ignore this message.



Dragon: Manage Vocabulary

How to Add and Train a New Word



9. You will see **The vocabulary has been successfully trained** message.

