

HOUSTON METHODIST HOSPITAL

Our team of specialists combines its knowledge with the newest technologies to create comprehensive, personalized treatment plans, offering patients a better quality of life. The following physicians treat patients at the Houston Methodist Lung Center located in the Texas Medical Center.



Zeenat Safdar, MD, MS, FACP, FCCP, ATSF

Interim Director, Houston Methodist Lung Center
Director, Clinical Research, Houston Methodist Lung Center
Director, Pulmonary Hypertension Program

EXPERTISE

- Pulmonary hypertension
- Chronic thromboembolic pulmonary hypertension (CTEPH)
- Interstitial lung disease and idiopathic pulmonary fibrosis

BOARD CERTIFICATIONS

- Internal medicine
- Pulmonary medicine
- Critical care medicine

EDUCATION AND TRAINING

- Medical education: Sind Medical College, Pakistan
- Master's degree: Clinical investigation, Baylor College of Medicine
- Residency: Internal medicine, The State University of New York Health Science Center
- Fellowships: Internal medicine, Mount Sinai St. Luke's; and pulmonary and critical care medicine, Mount Sinai St. Luke's Hospital/Columbia University

LOCATION

6445 Main St.
Houston Methodist
Outpatient Center
22nd Floor
Houston, TX 77030
713.441.7779



Leonard Chow, MD

EXPERTISE

- Insomnia
- Narcolepsy
- Chronic obstructive pulmonary disease (COPD)
- Asthma
- Pleural diseases
- Lung cancer

BOARD CERTIFICATIONS

- Internal medicine
- Pulmonary disease

EDUCATION AND TRAINING

- Medical education: The University of Texas Medical School at San Antonio
- Residency: Internal medicine, The University of Texas Medical Branch at Galveston

LOCATION

6445 Main St.
Houston Methodist
Outpatient Center
22nd Floor
Houston, TX 77030
713.441.7779



Alberto Colomer, MD

EXPERTISE

- Pulmonary hypertension
- Endobronchial ultrasound (EBUS)

BOARD CERTIFICATIONS

- Internal medicine
- Pulmonary medicine
- Critical care medicine

EDUCATION AND TRAINING

- Medical education: Ponce School of Medicine and Health Sciences, Puerto Rico
- Residency: Internal medicine, The University of Texas Health and Science Center at Houston
- Fellowship: Pulmonary and critical care medicine, The University of Texas Health Science Center at Houston

LOCATION

6445 Main St.
Houston Methodist
Outpatient Center
22nd Floor
Houston, TX 77030
713.441.7779



Timothy A. Connolly, MD

AREAS OF EXPERTISE

- Chronic obstructive pulmonary disease (COPD)
- Sleep disorders
- Endobronchial ultrasound (EBUS)

BOARD CERTIFICATIONS

- Pulmonary disease
- Critical care medicine
- Sleep medicine

EDUCATION AND TRAINING

- Medical education: Georgetown University School of Medicine
- Residency: Internal medicine, Baylor College of Medicine
- Fellowship: Pulmonary, critical care and sleep medicine, Baylor College of Medicine

LOCATION

6445 Main St.
Houston Methodist
Outpatient Center
22nd Floor
Houston, TX 77030

713.441.7779



Carl G. Dahlberg, MD

AREAS OF EXPERTISE

- Asthma
- Chronic obstructive pulmonary disease (COPD)

BOARD CERTIFICATIONS

- Pulmonary disease
- Internal medicine
- Critical care medicine

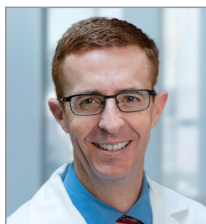
EDUCATION AND TRAINING

- Medical education: Baylor College of Medicine
- Residency: Internal medicine, Baylor College of Medicine
- Fellowship: Pulmonary and critical care medicine, Massachusetts General Hospital

LOCATION

6445 Main St.
Houston Methodist
Outpatient Center
22nd Floor
Houston, TX 77030

713.441.7779



Clinton Doerr, MD

AREAS OF EXPERTISE

- Sleep-disordered breathing
- Chronic obstructive pulmonary disease (COPD)
- Navigational bronchoscopy
- Pleural effusions

BOARD CERTIFICATIONS

- Pulmonary disease
- Critical care medicine
- Sleep medicine
- Internal medicine

EDUCATION AND TRAINING

- Medical education: Baylor College of Medicine
- Residency: Internal medicine, Baylor College of Medicine
- Fellowship: Pulmonary, critical care and sleep medicine, Mayo School of Graduate Medical Education

LOCATION

6445 Main St.
Houston Methodist
Outpatient Center
22nd Floor
Houston, TX 77030

713.441.7779



Lisa Kopas, MD

AREAS OF EXPERTISE

- Navigational bronchoscopy and endobronchial ultrasound (EBUS)
- Asthma
- Bronchial thermoplasty
- Chronic obstructive pulmonary disease (COPD)

BOARD CERTIFICATIONS

- Pulmonary disease
- Critical care medicine
- Internal medicine

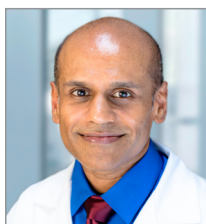
EDUCATION AND TRAINING

- Medical education: Baylor College of Medicine
- Residency: Internal medicine, Baylor College of Medicine
- Fellowship: Pulmonary and critical care medicine, Baylor College of Medicine

LOCATION

6445 Main St.
Houston Methodist
Outpatient Center
22nd Floor
Houston, TX 77030

713.441.7779



Jayasimha Murthy, MD

AREAS OF EXPERTISE

- Sleep disorders

BOARD CERTIFICATIONS

- Pulmonary disease
- Critical care medicine
- Sleep medicine
- Internal medicine

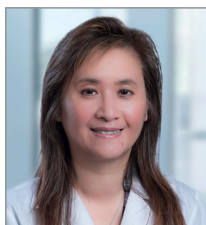
EDUCATION AND TRAINING

- Medical education: St. John's Medical College, India
- Residencies: Endocrinology, Samatvam/ Mallya Hospital, India; internal medicine, Topiwala National Medical College, India; and internal medicine, Coney Island Hospital
- Fellowship: Pulmonary, critical care and sleep medicine, Baylor College of Medicine

LOCATION

6445 Main St.
Houston Methodist
Outpatient Center
22nd Floor
Houston, TX 77030

713.441.7779



P. Julie Nguyen, MD

AREAS OF EXPERTISE

- Interstitial lung disease and pulmonary fibrosis
- Sleep-disordered breathing
- Chronic obstructive pulmonary disease (COPD)

BOARD CERTIFICATIONS

- Pulmonary disease
- Sleep medicine
- Internal medicine

EDUCATION AND TRAINING

- Medical education: The University of Texas Medical Branch at Galveston
- Residency: Internal medicine, The University of Texas Medical Branch at Galveston
- Fellowship: Pulmonary medicine, University of Texas Medical Branch at Galveston

LOCATION

6445 Main St.
Houston Methodist
Outpatient Center
22nd Floor
Houston, TX 77030

713.441.7779



Ghassan Noureddine, MD

AREAS OF EXPERTISE

- Asthma and allergies
- Sleep-disordered breathing

BOARD CERTIFICATIONS

- Pulmonary disease
- Critical care medicine
- Sleep medicine
- Internal medicine

EDUCATION AND TRAINING

- Medical education: American University of Beirut, Lebanon
- Residency: Internal medicine, Johns Hopkins University/Good Samaritan Hospital of Maryland
- Fellowships: Allergy and immunology, Johns Hopkins University; and pulmonary and critical care medicine, Baylor College of Medicine

LOCATION

6445 Main St.
Houston Methodist
Outpatient Center
22nd Floor
Houston, TX 77030

713.441.7779



Sandeep Sahay, MD

AREAS OF EXPERTISE

- Endobronchial ultrasound (EBUS)
- Pulmonary hypertension
- Chronic thromboembolic pulmonary hypertension (CTEPH)
- Pulmonary fibrosis

BOARD CERTIFICATIONS

- Internal medicine
- Pulmonary disease
- Critical care medicine

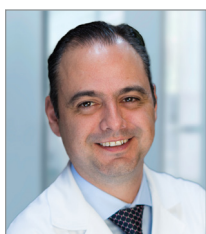
EDUCATION AND TRAINING

- Medical education: Maulana Azad Medical College, India
- Residency: Internal medicine, Cleveland Clinic Akron General
- Fellowship: Pulmonary and critical care medicine, The University of Texas Health Science Center at Houston

LOCATION

6445 Main St.
Houston Methodist
Outpatient Center
22nd Floor
Houston, TX 77030

713.441.7779



Jose Fernando Santacruz, MD

AREAS OF EXPERTISE

- Interventional bronchoscopy and navigational bronchoscopy
- Endobronchial ultrasound (EBUS)
- Central airway obstruction
- Lung cancer
- Lung nodules tracheobronchomalacia

BOARD CERTIFICATIONS

- Pulmonary disease
- Interventional pulmonology
- Internal medicine

EDUCATION AND TRAINING

- Medical education: Universidad Autonoma de Guadalajara, Mexico
- Residency: Internal medicine, Cleveland Clinic
- Fellowship: Interventional pulmonology, pulmonary and critical care medicine, Cleveland Clinic

LOCATION

6445 Main St.
Houston Methodist
Outpatient Center
22nd Floor
Houston, TX 77030

713.441.7779



Atif Siddiqui, MD

AREAS OF EXPERTISE

- Asthma
- Chronic obstructive pulmonary disease (COPD)
- Advanced bronchoscopy procedures

BOARD CERTIFICATIONS

- Pulmonary disease
- Hospice and palliative medicine
- Internal medicine

EDUCATION AND TRAINING

- Medical education: Dow Medical College, Karachi, Pakistan
- Residency: Internal medicine, Texas Tech University Health Science Center
- Fellowship: Pulmonary and critical care, Houston Methodist Hospital

LOCATION

6445 Main St.
Houston Methodist
Outpatient Center
22nd Floor
Houston, TX 77030

713.441.7779



Jihad Georges Youssef, MD

AREAS OF EXPERTISE

- Lung transplantation
- Chronic obstructive pulmonary disease (COPD)
- Sleep disorders
- Navigational bronchoscopy and endobronchial ultrasound (EBUS)

BOARD CERTIFICATIONS

- Pulmonary disease
- Internal medicine

- Critical care medicine
- Sleep medicine

EDUCATION AND TRAINING

- Medical education: American University of Beirut, Lebanon
- Residency: Internal medicine, Good Samaritan Hospital of Maryland
- Fellowships: Pulmonary disease and critical care medicine, State University of New York Health Science Center; and lung transplantation, University of Pittsburgh Medical Center

LOCATION

6445 Main St.
Houston Methodist
Outpatient Center
22nd Floor
Houston, TX 77030

713.441.7779



Faisal Zahiruddin, DO

AREAS OF EXPERTISE

- Sleep medicine
- Asthma
- Chronic obstructive pulmonary disease (COPD)
- Bronchoscopy
- Smoking cessation
- Allergic rhinitis
- Restless leg syndrome
- Narcolepsy
- REM behavior disorder

EDUCATION AND TRAINING

- Medical education: Doctor of Osteopathic Medicine, University of North Texas Health Science Center
- Residency: Internal medicine, The University of Texas at Austin Dell Medical School
- Fellowships: Pulmonary critical care, Houston Methodist Hospital; and sleep medicine at Emory University

LOCATION

6445 Main St.
Houston Methodist
Outpatient Center
22nd Floor
Houston, TX 77030

713.441.7779

HOUSTON METHODIST WILLOWBROOK HOSPITAL



Thalia Casimire, MD

AREAS OF EXPERTISE

- Asthma
- Chronic obstructive pulmonary disease (COPD)
- Cough evaluations
- Interstitial lung disease
- Lung nodule/masses
- Narcolepsy
- Obstructive sleep apnea
- Pulmonary hypertension
- Respiratory failure
- Shortness of breath evaluations
- Sleep study interpretation
- Endobronchial ultrasound (EBUS)

BOARD CERTIFICATIONS

- Internal medicine
- Pulmonary disease
- Critical care medicine
- Sleep medicine

EDUCATION AND TRAINING

- Medical education: Bachelor of Medicine, Bachelor of Surgery, The University of the West Indies
- Residency: Internal medicine, State University of New York Downstate Medical Center
- Fellowships: Sleep medicine, New York University; and pulmonary critical care medicine, State University of New York Downstate Medical Center

LOCATION

13300 Hargrave Rd.,
Suite 300
Houston, TX 77070

281.357.0111



Muralikrishna Chelikani, MD

AREAS OF EXPERTISE

- Asthma
- Chronic obstructive pulmonary disease (COPD)
- Cough evaluations
- Shortness of breath evaluations
- Sarcoidosis
- Interstitial lung disease
- Lung nodule/masses
- Pleural Effusions
- Pulmonary hypertension
- Obstructive sleep apnea

BOARD CERTIFICATIONS

- Internal medicine
- Pulmonary disease
- Critical care medicine

EDUCATION AND TRAINING

- Medical education: Andhra Pradesh University of Medical Sciences, India
- Postgraduate training: Royal College of Physicians, United Kingdom
- Residency: Lankenau Medical Center, Wynnewood, PA
- Fellowship: Pulmonary and critical care, Albert Einstein Medical Center; staff physician, Penn Presbyterian Medical Center, University of Pennsylvania

LOCATION

13300 Hargrave Rd.,
Suite 300
Houston, TX 77070

281.357.0111



Gregory R. Honeycutt, MD

AREAS OF EXPERTISE

- Acute respiratory distress syndrome
- Asthma
- Chronic obstructive pulmonary disease (COPD)
- Cough evaluations
- Interstitial lung disease
- Lung nodule/masses
- Narcolepsy
- Obstructive sleep apnea
- Periodic limb movement syndrome
- Pulmonary hypertension

BOARD CERTIFICATIONS

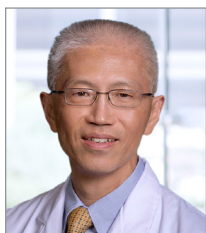
- Internal medicine
- Pulmonary disease
- Critical care

EDUCATION AND TRAINING

- Medical education: Baylor College of Medicine
- Residency: Internal medicine, Baylor College of Medicine
- Fellowships: Critical care and pulmonary transplant, Baylor College of Medicine

LOCATION

13300 Hargrave Rd.,
Suite 300
Houston, TX 77070
281.357.0111



Rayman Lee, MD

AREAS OF EXPERTISE

- Acute respiratory distress syndrome
- Asthma
- Chronic obstructive pulmonary disease (COPD)
- Cough evaluations
- Interstitial lung disease
- Lung nodule/masses
- Narcolepsy
- Obstructive sleep apnea
- Pulmonary hypertension
- Shortness of breath evaluations

BOARD CERTIFICATIONS

- Internal medicine
- Critical care
- Pulmonary disease
- Sleep medicine

EDUCATION AND TRAINING

- Medical education: University of North Carolina at Chapel Hill
- Residency: Internal medicine, The University of Texas Medical Branch at Galveston
- Fellowship: Pulmonary and critical care medicine, The University of Texas Medical Branch at Galveston

LOCATION

13300 Hargrave Rd.,
Suite 300
Houston, TX 77070
281.357.0111



Philip Lynn Pirtle, MD

AREAS OF EXPERTISE

- Asthma
- Chronic obstructive pulmonary disease (COPD)
- Cough evaluations
- Interstitial lung disease
- Lung nodule/masses
- Narcolepsy
- Obstructive sleep apnea
- Periodic limb movement syndrome
- Pulmonary hypertension
- Respiratory failure

BOARD CERTIFICATIONS

- Internal medicine
- Critical care
- Pulmonary disease
- Sleep medicine

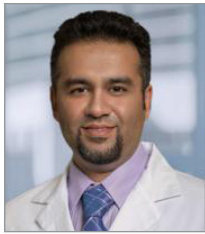
EDUCATION AND TRAINING

- Medical education: The University of Texas Medical Branch at Galveston
- Residency: Internal medicine, The University of Texas Medical Branch at Galveston
- Fellowships: Pulmonary medicine and critical care medicine, The University of Texas Medical Branch at Galveston

LOCATION

13300 Hargrave Rd.,
Suite 300
Houston, TX 77070
281.357.0111

HOUSTON METHODIST THE WOODLANDS HOSPITAL



Hammad N. Qureshi, MD

AREAS OF EXPERTISE

- Asthma
- Chronic obstructive pulmonary disease (COPD)
- Medical ICU patients
- Pulmonary hypertension
- Bronchoscopy
- Lung biopsy/surgery
- Sleep apnea
- Sleep disorders

BOARD CERTIFICATIONS

- Internal medicine
- Pulmonary disease
- Critical care medicine

EDUCATION AND TRAINING

- Medical education: King Edward medical College, Lahore, Pakistan
- Internship: University of Illinois
- Residency: Internal medicine, West Virginia University
- Fellowship: Pulmonary and critical care, Baylor College of Medicine

LOCATION

1111 Medical Plaza Dr.,
Suite 250
The Woodlands,
TX 77380

281.296.8788