

# Caregility Telestroke Cart and iPad Overview



Audience: IP Providers, Clinicians and Staff

## Caregility – 301C Telestroke Cart

- Wireless cart must be placed 3-5 feet from the foot of the observed patient’s bed.
- Make sure the cart does not block the walkway or have any wires/cords that can cause someone to trip.
- Ensure the cart is plugged in, even when stored.
- Always clean the cart according to hospital policy before placing it in another patient’s room.
- Never touch, cover or move the camera to reposition – it will break the camera. Instead, move the cart.

### Cleaning process between patient use:

1. Before cleaning:
  - Turn off the system’s power.
  - Do not spray into the equipment tray.
  - Do not grab or spray the microphone.
  - Do not grab the camera or move the camera head.
  - Do not spray the camera lenses, camera or speaker.
  - Do not unplug or move any wires while cleaning.
2. Clean the cart components with hospital-approved cleaning wipes (if exposed to c-diff, only use bleach wipes).
3. To clean the monitor and components, use a dry, soft cloth or duster. When necessary, use hospital-approved cleaning wipes. Avoid excess dampness, and do not allow liquids to spill inside.

### To reboot the device:

**\*\*ONLY reboot the system if the patient is in route, time permits or after the patient is seen. Resort to an iPad if the system needs rebooting. \*\***

1. Hold down the **power** button on the main panel until device powers off.
2. Wait 10-20 seconds.
3. Power the device back on, using the button on the main panel.
4. The device will reboot.
5. If issues continue, contact the IT Help Desk. In an emergency, convert to a back-up iPad.

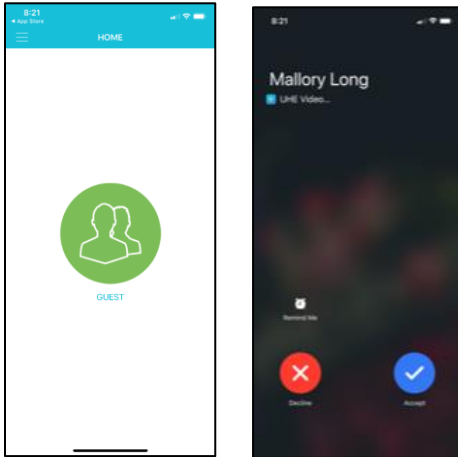


# Caregility Telestroke Cart and iPad Overview

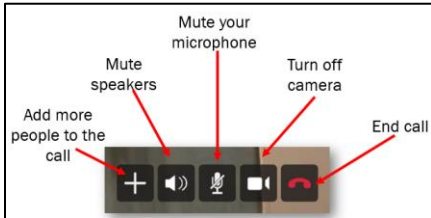


## Caregility – Telestroke iPad

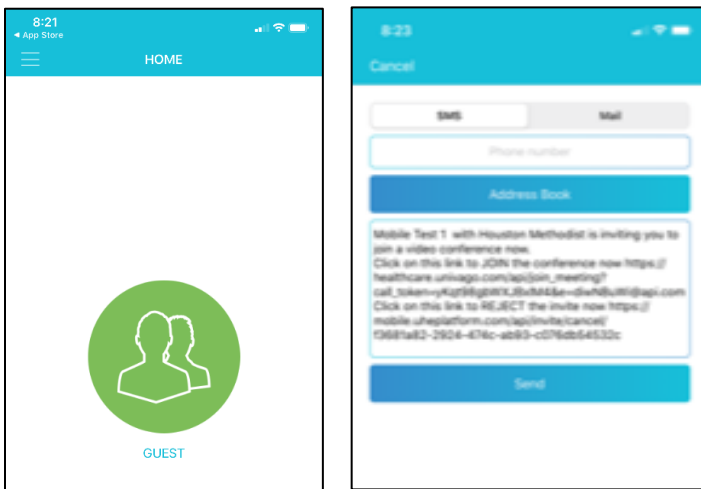
- Mobile iPads are locked down to the **Caregility (UHE)** app. Staff can accept inbound calls from physicians for telestroke consults. Note: iPads are not setup to auto answer.



- Once in the call, staff have controls to mute the mic/camera and add participants.



- To call a provider, select the **Guest** icon on the main screen. Invites can be sent via text or email



# Caregility Telestroke Cart and iPad Overview



## Quick Snapshot

### Stroke Cart

- The clinician will bring the stroke cart to the patient's bedside.
- All other items, like PerfectServe, are completed on a desktop.
- The physician will connect to the cart via app/or desktop.
  - The cart will auto answer the physician's call.
- No other action is needed on the cart.

### iPad

- The physician will place a call to the appropriate iPad.
- Clinicians must **Accept** the incoming call from the iPad and place it at the patient's bedside.

### If Provider Cannot Log In

- Only the iPad will be used.
- The clinician will use the **Guest** icon and send the provider the **add participant** link (text message or email).
- The physician will receive a text link and join the visit.
- PTZ will not be available.

# Caregility Telestroke Cart and iPad Overview



## Device Locations

### Stroke cart locations:

Location	Cart Name
HMTW ED	HMTW Stroke Cart 1
HMWB ED	HMWB Stroke Cart 1
HMB ED	HMB Stroke Cart 1
HMCL ED	HMCL Stroke Cart 1
HMSL ED	HMSL Stroke Cart 1
HMW ED	HMW Stroke Cart 1

### Stroke iPad locations:

Location	iPad Name
HMSL IP Roaming	HMSL IP Stroke
HMSL Sienna ECC	HMSL Sienna ECC Stroke
HMW IP Roaming	HMW IP Stroke
HMW IP Med Surg	HMW Med Surg Stroke
HMW ED Backup	HMW ED Stroke
HMW Cinco Ranch ECC	HMW Cinco Ranch ECC Stroke
HMWB IP Roaming	HMWB IP Stroke
HMWB Cypress ECC	HMWB ECC Cypress Stroke
HMWB Spring ECC	HMWB ECC Spring Stroke
HMTW ED Backup	HMTW ED Stroke
HMTW ECC	HMTW ECC Stroke
HMB ED Backup	HMB ED Stroke
HMB IP Roaming	HMB IP Stroke
HMCL IP Roaming	HMCL IP Stroke
HMCL ED Backup	HMCL ED Stroke